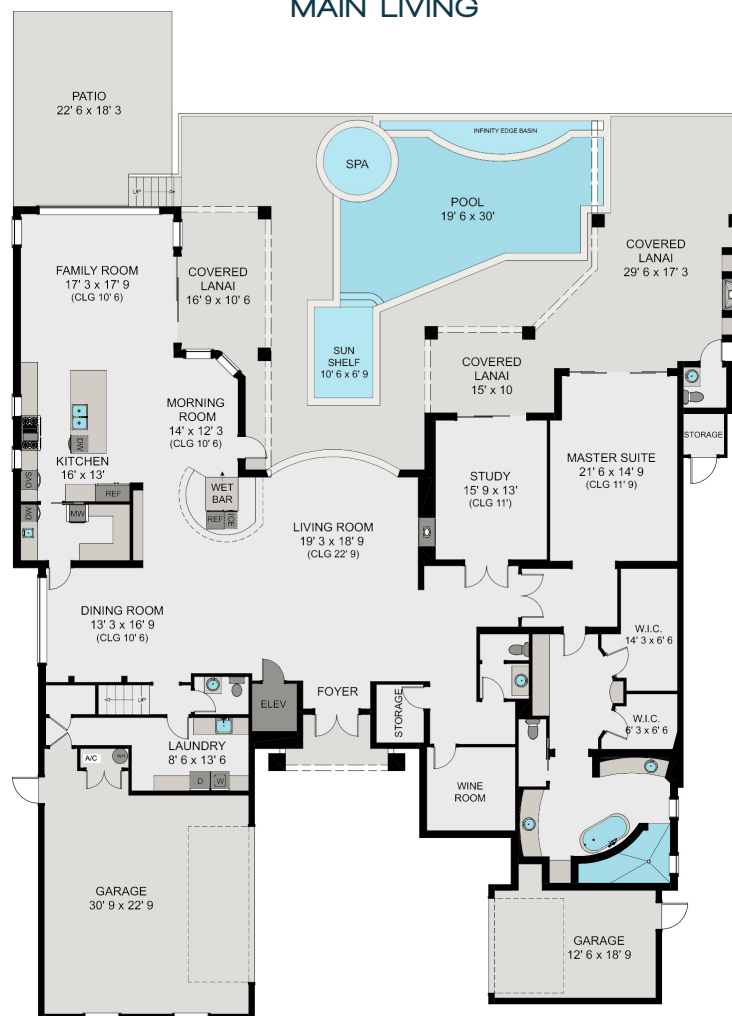




## UPPER LIVING



## MAIN LIVING



# 319

## DEVILS BIGHT

PARK SHORE - NAPLES

### DETAILS

Bedrooms	6 + Den
Bathrooms	4/3
Garage	3
Year Built	2003

TOTAL LIVING AREA 6,269 sq ft

TOTAL AREA 8364 sq ft

LOT DIMENSIONS 90x151x111x151

-Eligible for Venetian Bay Yacht Club Boat Slip

-Eligible for Park Shore Beach Association

## MICHAEL G. LAWLER, PA

239.261.3939  
INFO@MICHAELG.LAWLER.COM  
800 HARBOUR DR | NAPLES, FL 34103



800 HARBOUR DRIVE, NAPLES, FLORIDA 34103 (239) 261-3939 © 2024 DOUGLAS ELLIMAN REAL ESTATE. ALL MATERIAL PRESENTED HEREIN IS INTENDED FOR INFORMATION PURPOSES ONLY. WHILE, THIS INFORMATION IS BELIEVED TO BE CORRECT, IT IS REPRESENTED SUBJECT TO ERRORS, OMISSIONS, CHANGES OR WITHDRAWAL WITHOUT NOTICE. ALL PROPERTY INFORMATION, INCLUDING, BUT NOT LIMITED TO SQUARE FOOTAGE, ROOM COUNT, NUMBER OF BEDROOMS AND THE SCHOOL DISTRICT IN PROPERTY LISTINGS SHOULD BE VERIFIED BY YOUR OWN ATTORNEY, ARCHITECT OR ZONING EXPERT. EQUAL HOUSING OPPORTUNITY. WE CONSIDER THIS INFORMATION TO BE RELIABLE, BUT BECAUSE IT HAS BEEN SUPPLIED BY THIRD PARTIES, WE CANNOT REPRESENT THAT IT IS ACCURATE, COMPLETE, OR THE MOST RECENT INFORMATION AND IT SHOULD NOT BE RELIED UPON AS SUCH.

HARBOUR POINT BUSINESS CENTER

239.261.3939 | 800 HARBOUR DR | NAPLES, FL 34103

